

DIMENSÕES GERAIS

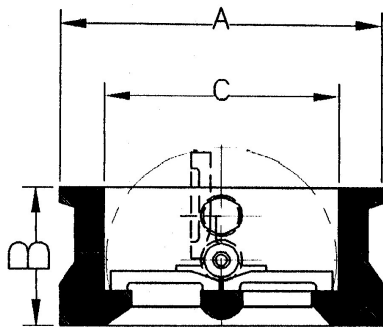
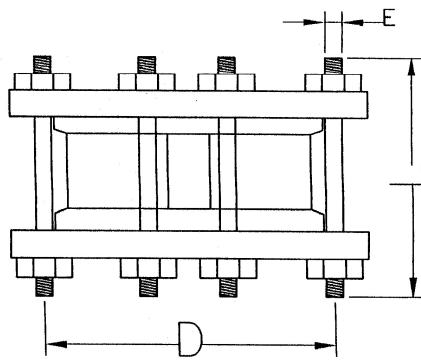


Fig. VR781



** Verificar as especificações técnicas na página 028.

POL.	MM	A	B	C	QUANT.	E	PESO (Kg)
2"	50	101	54	66	4	5/8"	2
2.1/2"	65	120	54	78	4	5/8"	4
3"	80	133	57	89	4	5/8"	5
4"	100	164	64	117	8	5/8"	7
5"	125	194	70	141	8	3/4"	10
6"	150	220	76	168	8	3/4"	15
8"	200	275	95	210	8	3/4"	34
10"	250	330	108	233	12	7/8"	47
12"	300	380	143	311	12	7/8"	83
14"	350	451	143	356	12	7/8"	89
16"	400	514	153	406	12	7/8"	95